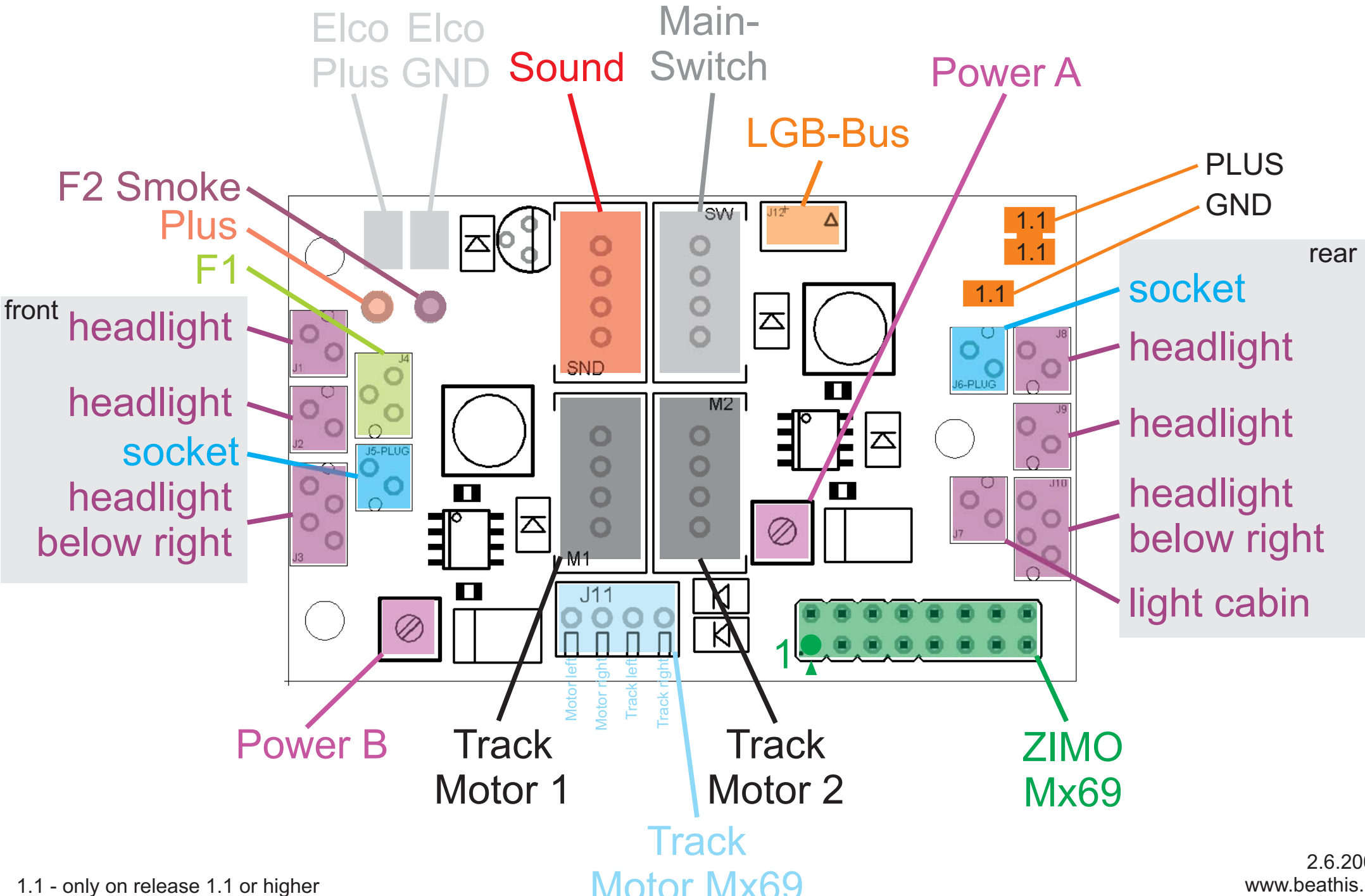
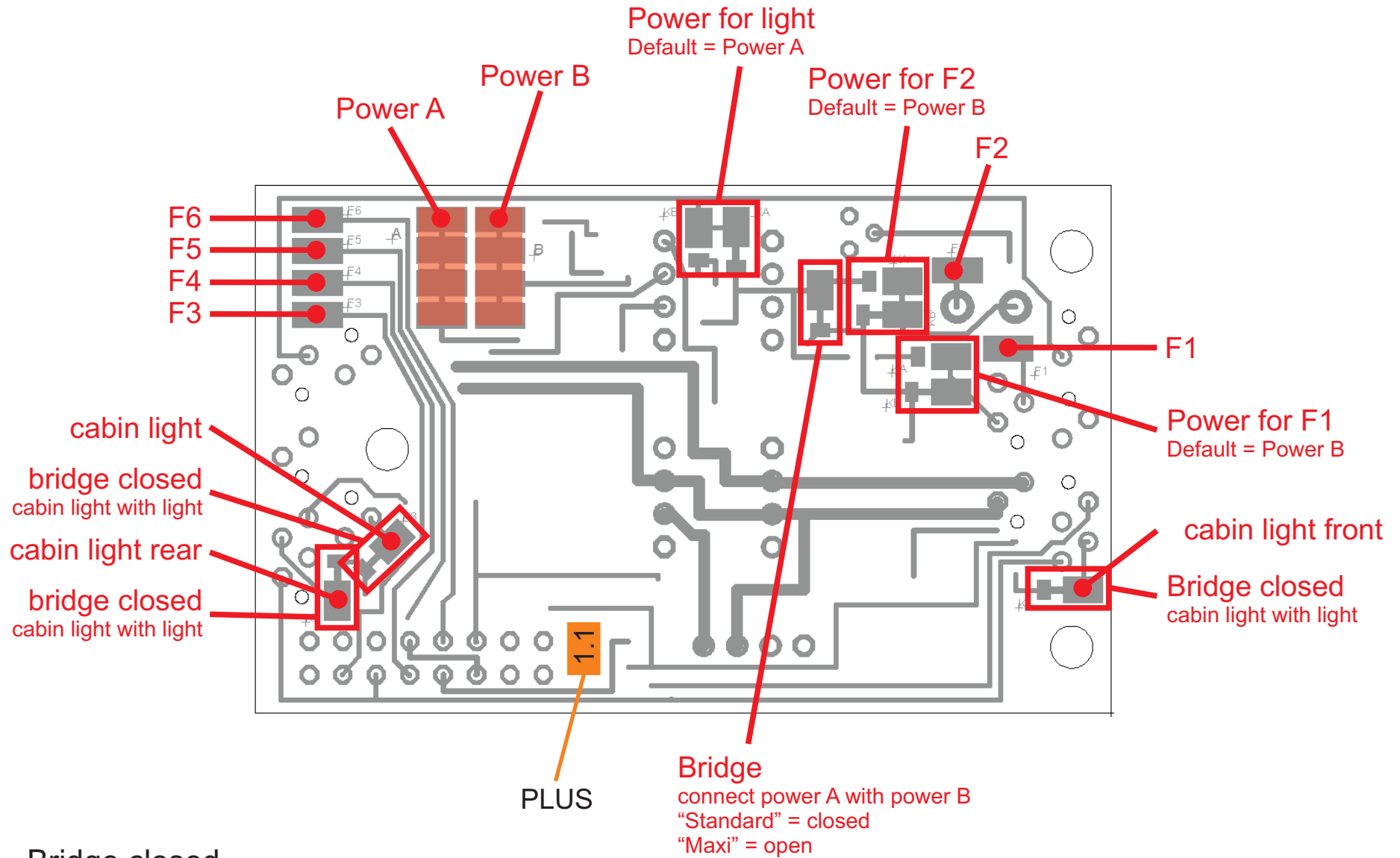




LGB-Adapter for MX69 - Top



1.1 - only on release 1.1 or higher

LGB-Adapter for MX69 - Bottom



-  Bridge closed
to open: scratch connection
-  Bridge open
to close: solder

1.1 - only on release 1.1 or higher

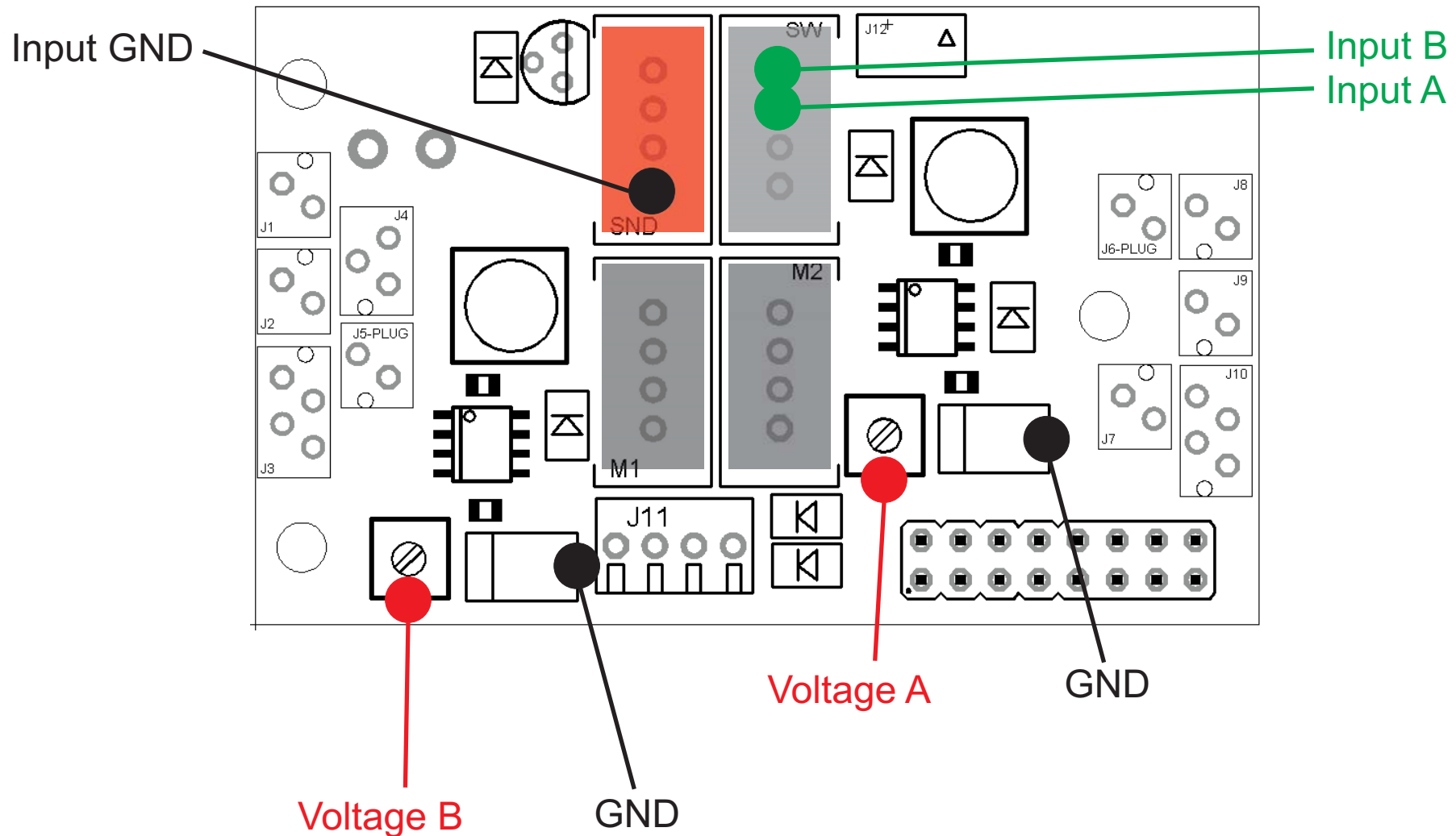
LGB-Adapter for MX69 - Voltage

The default voltages are 7V.

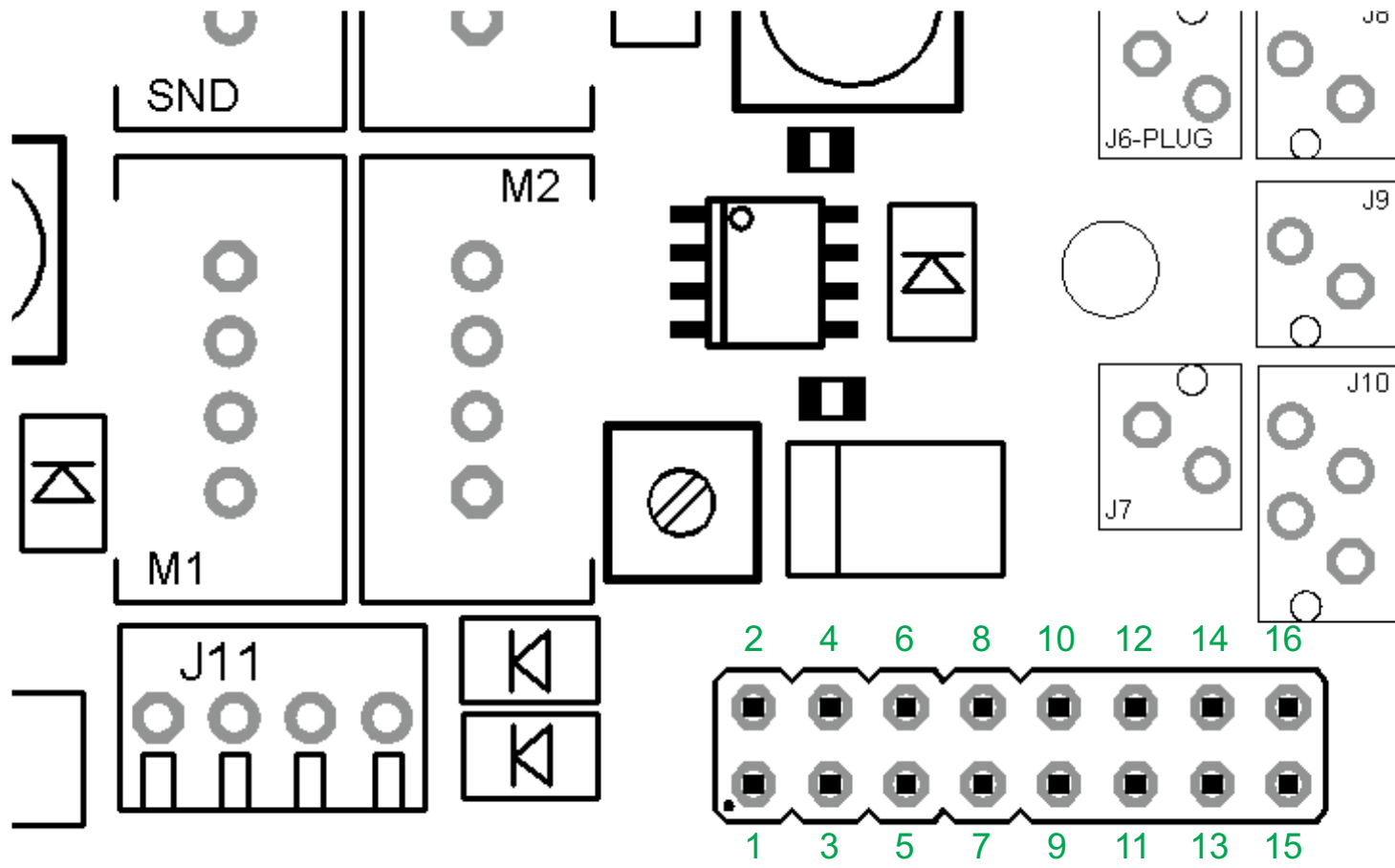
Please use a multimeter to measure the voltages (position dc).

Connect a power supply (voltage 8 to 20V DC) with "Input GND" and "Input A".

Measure the voltage between GND and voltage A. Adjust the voltage to the desired value.



LGB-Adapter for MX69 - connector



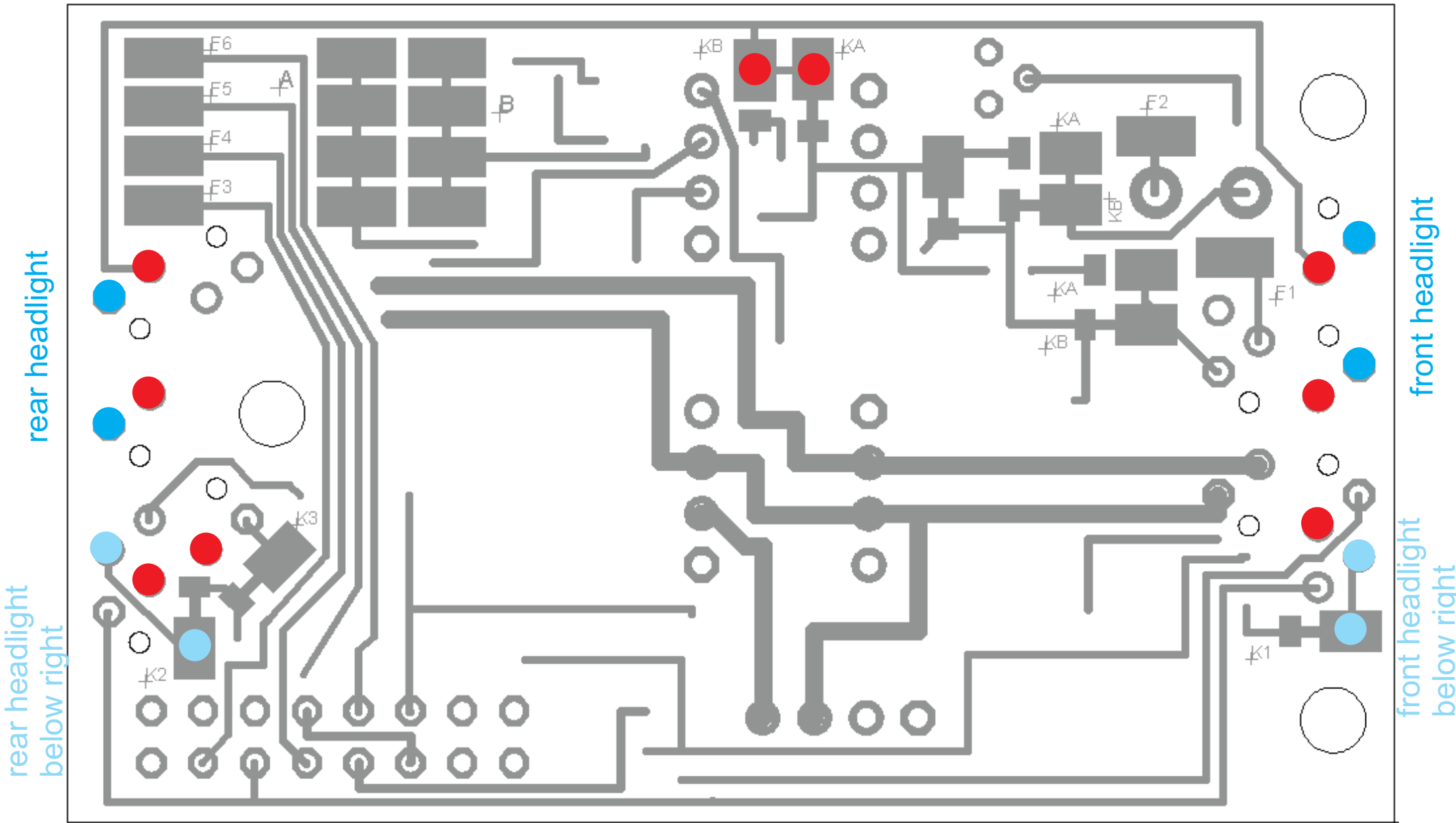
1: not used
2: not used
3: not used
4: not used
5: Plus Decoder
6: front headlight
7: function output 2
8: function output 6

9: function output 4
10: Plus Decoder
11: rear headlight
12: function output 5
13: function output 3
14: function output 1
15: ground
16: not used

Remark

The red pins must be connected always. If you need other functions, connect all the pins.

LGB-Adapter for MX69 - Bottom light



● Light PLUS